



Motors

Wednesday, December 05, 2012

Technical Data Center
PO Box 2204
Fort Wayne, IN 46801-2204

DataPack Document, Version: v12127215.01

Customer Order / Item:	4502177739	Sales Order No:	5200010957
Customer Part:	None	Order Line No:	1.1
MODEL NUMBER: 5KS364SAA385		Estimated Weight:	1030 Lbs
Outline Drawing:	239C6200JJ	Time Rating:	CONT
Connection Diagram:	GEM2034E-FIG7	Enclosure:	TEFC
Instruction Book:	GEI-56128	Encl Construction:	X\$D
Design Code:	36BD3004B	Ambient Max(°C):	40
Type:	KS	Insulation Class:	H
Frame:	364T	NEMA Design:	B
Phases:	3	Nominal Efficiency:	94.1%
Poles:	6	Guaranteed Efficiency:	93.6%
Output Power:	40HP 29.8KW	3/4 Load Efficiency:	94.8%
RPM:	1185	KVA Code:	G
Voltage:	575	Max KVAR:	14.1
Hertz:	60	Power Factor:	81.5
Amps - FL:	39.1	Bearing - DE:	6314ZC3
Service Factor:	1.25	Bearing - ODE:	6314ZC3
Alt Service Factor:	1		

Enclosure is Totally Enclosed Fan-Cooled

Stamped Nameplate Notes:

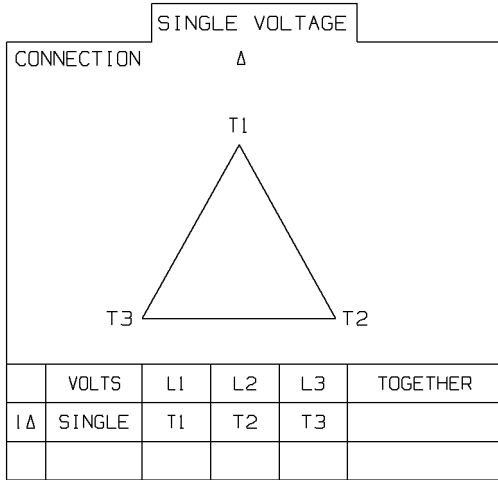
ALTERNATE RATING FOR PWM CONTROL: 1.0SF 40C AMB
INVERTER DUTY CONSTANT TORQUE RANGE: 3-60HZ
HTR LDS H 115V 100W
OVER TEMP PROT 2
IP 55
SF AMPS 48.0

Additional Information:

6P - T EXTN
346 CU IN - 3.00" NPT
OIL RESISTANT SLEEVING ON LEADS
SIEMENS THERMISTOR LDS TO ACCESSORY BOX
115V HTR LDS TO CONDUIT ELBOW
F1 MOUNTING

Diagrams for Model: 5KS364SAA385

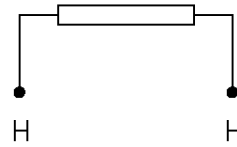
**Connection Diagram
GEM2034E-FIG7**



Heater Connection

3027JE-1

FIG. 1
HEATER CONN.



CONTROL	L1	L2
VOLTAGE ONLY	H	H

Performance Characteristics

1st Winding 1st Connection

Design: 36BD3004B

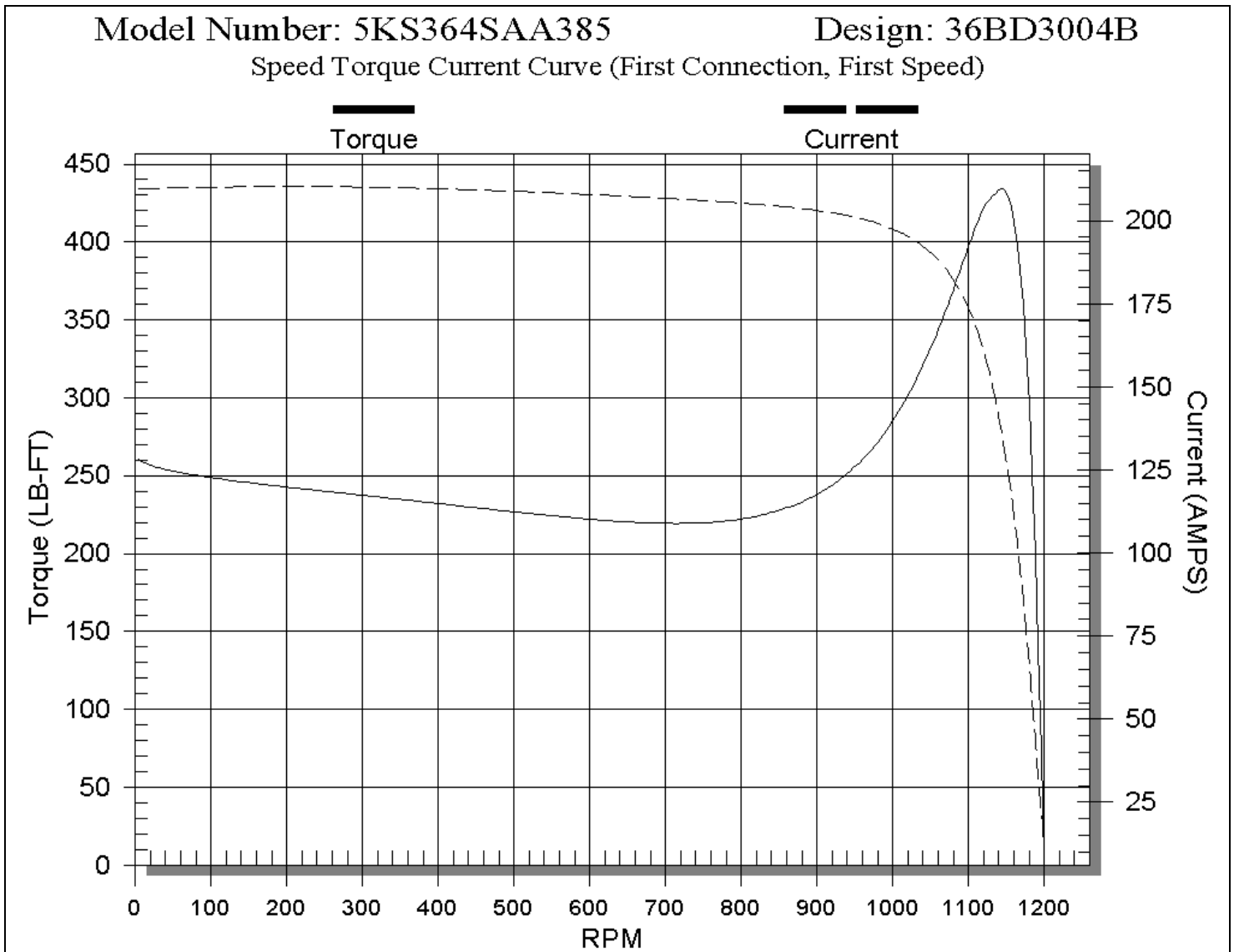
LOAD %	125.0	115.0	100.0	75.0	50.0	25.0	0.0
% EFF	93.98	94.24	94.10	94.84	94.47	91.81	0.00
% PF	83.46	82.88	81.50	76.80	66.59	44.37	3.59
AMPS	47.73	44.10	39.10	30.84	23.80	18.38	15.80

TORQ(FL)#FT 176.95 TORQ(LR)%FL 149.14 TORQ(BD)%FL 242.48
 AMPS(LR) 209.62 PF AT START 0.34

This motor is capable of two cold or one hot start with a maximum connected load inertia of 3765.0 Lb-Ft Sq (158.7 Kg-meter Sq) at 100% voltage, where the load torque varies with the square of the speed. Acceleration time with maximum inertia and the above load type is 75 seconds. Safe stall time at 100% voltage is 127 seconds cold, 86 seconds hot. Rotor inertia is 23.26 Lb-Ft Sq (0.980 Kg-meter Sq).

Open Circuit A-C: 0.564
 Short Circuit A-C: 0.032
 Stator Slots: 72

Short Circuit D-C: 0.021
 X/R Ratio: 8.099
 Rotor Slots: 58



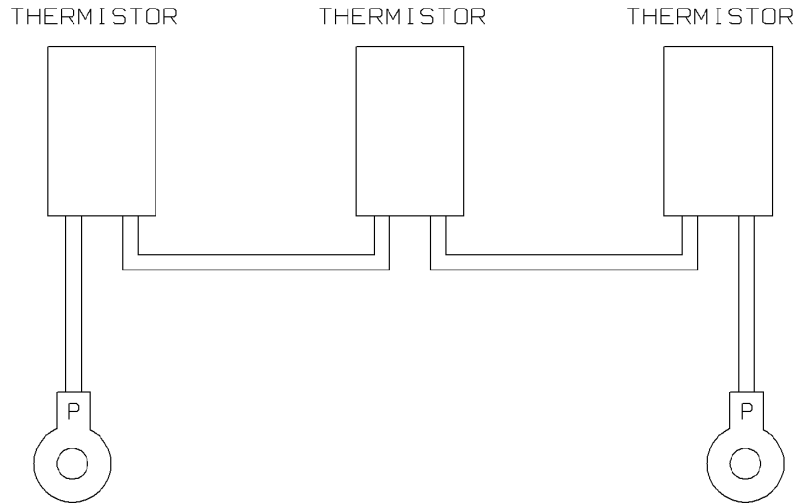


REV 1 SH 1 DWG NO 235A3027LR SIZE A	THIRD ANGLE PROJECTION	REVISIONS			
		REV	DESCRIPTION	DATE	APPROVED
		1	ECN 940B-2883 BEF	11/04/94	

PROPRIETARY AND CONFIDENTIAL

This document is the property of General Electric Company and contains proprietary and confidential information of General Electric Company. This document is loaned on the express condition that neither it nor the information contained therein shall be disclosed to others without the express consent of GE Motors and that the information shall be used by the recipient only as approved expressly by GE Motors. Also, this document shall be returned to the Company upon its request.

GE MOTORS



NOTE:

THREE THERMISTORS, ONE IN EACH PHASE, ARE CONNECTED IN SERIES. TWO LEADS ARE BROUGHT OUT INTO THE CONDUIT BOX, EACH MARKED "P". LEADS SHOULD BE CONNECTED TO A CONTROL MODULE WHICH IS MOUNTED SEPERATE FROM MOTOR.

UNLESS OTHERWISE SPECIFIED	SIGNATURES	DATE	 Fort Wayne, Indiana		
DIMENSIONS ARE IN INCHES TOLERANCES ON: 2 PL DECIMALS ± 3 PL DECIMALS ± ANGLES ± 1 FRACTIONS ±	DRAWN M.M.L.	5-18-89			
	CHECKED W.M.P.	5-18-89			
	ISSUED W.M.P.	5-18-89			
MATERIAL:	CONNECTION DIAGRAM THERMISTORS SINGLE WINDING, RANDOM WOUND, UNTAPED MOTORS		DISTR TO		
APPLIED PRACTICES:	CAD NO. F500:235A3027LR	SIZE A		FSCM NO	DWG NO 235A3027LR
		SCALE 1:1		SHEET 1 OF 1	

